

Suspended luminaire/light run feed luminaire - Single micro louvre with 80° lens - direct/indirect distribution

Housing of sheet steel in a delicate square design; black, die-cast aluminium end faces; Housing colour silver grey/white aluminium RAL 9006; Light distribution direct/indirect distribution by means of Single micro louvre with 80° lens, with single micro louvre, black, homogeneous indirect share with opal diffuser made of PMMA. Suitable for VDU workstations, 65° < 100 cd/m<sup>2</sup> omnidirectional glare reduction in accordance with current DIN-EN 12464-1 standard, UGR (4H/8H) 15.3. Electrical connection via integrated transparent connection cable 5x0.75mm<sup>2</sup>, length 1900mm, wired ready for connection. Light Control: netlife easy01C; Regiolux Classification: netlife easy; Control signal: DALI; Number of control gear (max): 32; Communication: Bluetooth; App name: Osram BT Config; Osram BT Control; Note: up to 4 DALI sensors or DALI push button coupler can also be connected; System extension: easy01S; Application: Office, Meeting rooms, Corridors, Classrooms, Secondary rooms; Function: Motion detection\*, Corridor function\*, presence detection\*, Daylight control\*, Tunable white (only with DT8 luminaires), Manual dimming, \*only by auxiliary devices. Complete height-adjustable suspension set with canopy is included in delivery. Black housing and white single micro louvre possible on request.

**CHARACTERISTICS**

Order number	60612035675
EAN number	4020863420070
Commodity code	94051190
Certification mark	IP 20, Protection class I, VDU 65°<100, F, Indoor, CE
Impact resistance (IK rating)	IK02
Ambient temperatur	ta 25°C
Warranty period	5 years
State funding programs	BEG - Federal funding for efficient buildings (valid only for Germany)

**ELECTRICAL ENGINEERING**

Controller	Electronic driver DALI (1 pcs.)
Light Control	netlife easy01C
Wiring	5x0.75mm <sup>2</sup>
System output	30W
Mains voltage	230V/50Hz
Circuit breakers (inrush current)	18 pieces/B10, 28 pieces/B16, 30 pieces/C10, 46 pieces/C16
Energy efficiency class/light source	C

**LIGHTING TECHNOLOGY**

Placement	LED, Colour rendering/Light colour CRI ≥ 80 / 3000K
Colour tolerance (MacAdam)	3SDCM
Photobiological safety (Luminaire)	RG1
Nominal luminous flux	4094lm
LED service life	50000h L80/B10 (Tq 25°C)
Luminaire luminous efficiency	134lm/W
UGR lat./long.	15.3 / 15.2

**MECHANICS**

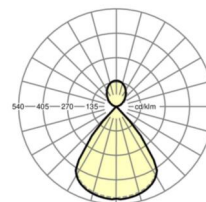
Housing colour	silver grey/white aluminium RAL 9006
Dimensions (LxWxH/DxH)	1131mm x 51mm x 69mm
Weight (net)	3.2kg
Type of installation	Pendant individual mounting, Pendant light strip mounting

**Dimensions**

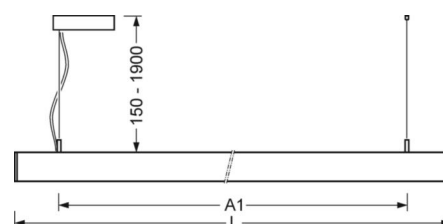
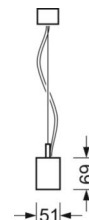
L	1131 mm	Length
B	51 mm	Width
H	69 mm	Height
A1	985 mm	Mounting distance single mounting
P min	150 mm	Minimum suspension length
P max	1900 mm	Maximum suspension length

**DEEP-LINK**

<https://www.regiolux.de/en/article/60612035675>



Reference	LED 4100lm 830
ηLB	100 %
Φ ↓/↑	68 % / 32 %
UGR lat./long.	15.3 / 15.2



## LC SYSTEM

### CHARACTERISTICS

<b>Regiolux Classification</b>	netlife easy
<b>Control signal</b>	DALI
<b>Number of control gear (max)</b>	32
<b>Communication</b>	Bluetooth
<b>App name</b>	Osram BT Config; Osram BT Control
<b>Note</b>	up to 4 DALI sensors or DALI push button coupler can also be connected
<b>System extension</b>	easy01S
<b>Application</b>	Office, Meeting rooms, Corridors, Classrooms, Secondary rooms
<b>Function</b>	Motion detection*, Corridor function*, presence detection*, Daylight control*, Tunable white (only with DT8 luminaires), Manual dimming, *only by auxiliary devices

